



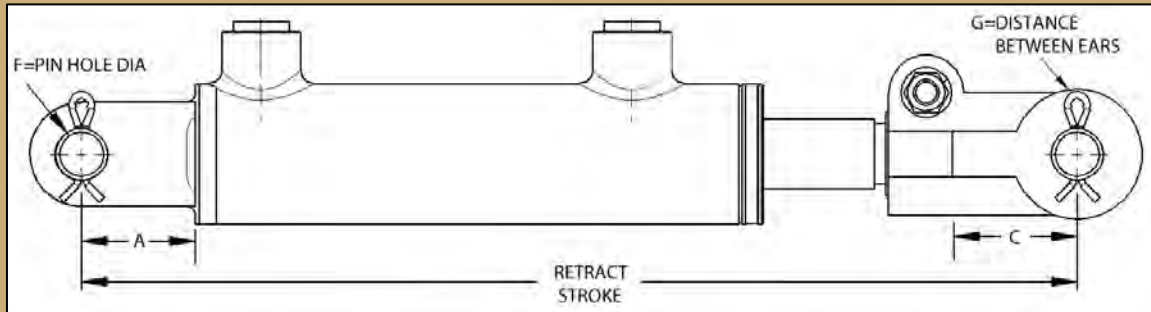
C Y L I N D E R S

Standard 3000 PSI Welded Clevis Cylinders



FEATURES:

- 100% tested for quality assurance
- Hard chrome rod plating for corrosion & wear resistance
- Cast steel end fittings for high strength & low cost
- Top port design
- SAE O-ring ports for reliable & leak-free connection
- Thread-in gland design for serviceability
- High luster black paint for protection from the elements
- Individually bagged & boxed for secure storage & transport



MODEL	BORE	PORTS	A	C	F	G
WWCL1500-S	1.5	SAE 6	1.63	1.62	0.75	0.88
WWCL2000-S	2.0	SAE 8	2.13	2.12	1.00	1.13
WWCL2500-S	2.5	SAE 8	2.13	2.13	1.00	1.13
WWCL3000-S	3.0	SAE 8	1.88	2.13	1.00	1.13
WWCL3500-S	3.5	SAE 8	1.88	2.13	1.00	1.13
WWCL4000-S	4.0	SAE 8	1.75	2.13	1.00	1.13

MODEL	BORE x STROKE			RETRACT	ROD DIA.	COLUMN LOAD RATINGS	WT/LBS	LIST PRICE
WWCL1504-S	1.5	X	4	14.25	1	FULL PSI	10	145.80
WWCL1506-S	1.5	X	6	16.25	1	FULL PSI	11	152.50
WWCL1508-S	1.5	X	8	18.25	1	FULL PSI	12	159.20
WWCL1508-ASAE	1.5	X	8	20.25	1	FULL PSI	13	162.60
WWCL1510-S	1.5	X	10	20.25	1	FULL PSI	13	166.00
WWCL1512-S	1.5	X	12	22.25	1	FULL PSI	15	172.50
WWCL1514-S	1.5	X	14	24.25	1	FULL PSI	16	179.20
WWCL1516-S	1.5	X	16	26.25	1	FULL PSI	17	186.00
WWCL1518-S	1.5	X	18	28.25	1	4800 (2720 PSI)*	18	193.50

WWCL2004-S	2	X	4	14.25	1.13	FULL PSI	16	187.10
WWCL2006-S	2	X	6	16.25	1.13	FULL PSI	17	195.10
WWCL2008-S	2	X	8	18.25	1.13	FULL PSI	19	203.20
WWCL2008-ASAE	2	X	8	20.25	1.13	FULL PSI	20	207.20
WWCL2010-S	2	X	10	20.25	1.13	FULL PSI	20	211.20
WWCL2012-S	2	X	12	22.25	1.13	FULL PSI	22	219.00
WWCL2014-S	2	X	14	24.25	1.13	FULL PSI	24	227.10
WWCL2016-S	2	X	16	26.25	1.13	FULL PSI	25	235.20
WWCL2018-S	2	X	18	28.25	1.13	FULL PSI	27	243.20
WWCL2020-S	2	X	20	30.25	1.13	9100 (2900 PSI)*	28	251.20
WWCL2024-S	2	X	24	34.25	1.13	6700 (2130 PSI)*	31	267.00
WWCL2030-S	2	X	30	40.25	1.13	4600 (1470 PSI)*	36	291.10
WWCL2036-S	2	X	36	46.25	1.13	3400 (1080 PSI)*	41	314.30



C Y L I N D E R S

Standard 3000 PSI Welded Clevis Cylinders

MODEL	BORE x STROKE		RETRACT	ROD DIA.	COLUMN LOAD RATINGS	WT/LBS	LIST PRICE
WWCL2504-S	2.5	X 4	14.25	1.25	FULL PSI	19	214.70
WWCL2506-S	2.5	X 6	16.25	1.25	FULL PSI	21	224.30
WWCL2508-S	2.5	X 8	18.25	1.25	FULL PSI	23	233.80
WWCL2508-ASAE	2.5	X 8	20.25	1.25	FULL PSI	24	238.60
WWCL2510-S	2.5	X 10	20.25	1.25	FULL PSI	24	243.30
WWCL2512-S	2.5	X 12	22.25	1.25	FULL PSI	26	252.60
WWCL2514-S	2.5	X 14	24.25	1.25	FULL PSI	28	262.20
WWCL2516-S	2.5	X 16	26.25	1.25	FULL PSI	30	271.90
WWCL2518-S	2.5	X 18	28.25	1.25	FULL PSI	32	281.40
WWCL2520-S	2.5	X 20	30.25	1.25	FULL PSI	34	290.90
WWCL2524-S	2.5	X 24	34.25	1.25	14000 (2850 PSI)*	38	309.40
WWCL2530-S	2.5	X 30	40.25	1.25	9600 (1960 PSI)*	44	338.00
WWCL2536-S	2.5	X 36	46.25	1.25	7000 (1430 PSI)*	49	368.50
WWCL2548-S	2.5	X 48	58.25	1.25	3500 (710 PSI)*	50	426.70

WWCL3004-S	3	X 4	14.25	1.5	FULL PSI	24	259.90
WWCL3006-S	3	X 6	16.25	1.5	FULL PSI	26	271.80
WWCL3008-S	3	X 8	18.25	1.5	FULL PSI	29	283.50
WWCL3008-ASAE	3	X 8	20.25	1.5	FULL PSI	31	288.10
WWCL3010-S	3	X 10	20.25	1.5	FULL PSI	31	292.60
WWCL3012-S	3	X 12	22.25	1.5	FULL PSI	34	306.70
WWCL3014-S	3	X 14	24.25	1.5	FULL PSI	36	318.60
WWCL3016-S	3	X 16	26.25	1.5	FULL PSI	39	330.30
WWCL3018-S	3	X 18	28.25	1.5	FULL PSI	41	342.00
WWCL3020-S	3	X 20	30.25	1.5	18800 (2660 PSI)*	43	353.70
WWCL3024-S	3	X 24	34.25	1.5	14000 (1980 PSI)*	48	376.60
WWCL3030-S	3	X 30	40.25	1.5	9600 (1360 PSI)*	56	411.50
WWCL3036-S	3	X 36	46.25	1.5	7000 (990 PSI)*	63	448.40

WWCL3504-S	3.5	X 4	14.25	1.75	FULL PSI	29	303.20
WWCL3506-S	3.5	X 6	16.25	1.75	FULL PSI	32	317.40
WWCL3508-S	3.5	X 8	18.25	1.75	FULL PSI	35	331.30
WWCL3508-ASAE	3.5	X 8	20.25	1.75	FULL PSI	38	338.40
WWCL3510-S	3.5	X 10	20.25	1.75	FULL PSI	38	345.50
WWCL3512-S	3.5	X 12	22.25	1.75	FULL PSI	41	359.60
WWCL3514-S	3.5	X 14	24.25	1.75	FULL PSI	44	373.40
WWCL3516-S	3.5	X 16	26.25	1.75	FULL PSI	47	387.70
WWCL3518-S	3.5	X 18	28.25	1.75	FULL PSI	50	401.80
WWCL3520-S	3.5	X 20	30.25	1.75	FULL PSI	53	416.50
WWCL3524-S	3.5	X 24	34.25	1.75	26000 (2700 PSI)*	59	445.80
WWCL3530-S	3.5	X 30	40.25	1.75	17900 (1860 PSI)*	68	486.20
WWCL3536-S	3.5	X 36	46.25	1.75	13000 (1350 PSI)*	78	529.60

WWCL4004-S	4	X 4	14.25	2	FULL PSI	35	359.90
WWCL4006-S	4	X 6	16.25	2	FULL PSI	38	376.30
WWCL4008-S	4	X 8	18.25	2	FULL PSI	42	392.50
WWCL4008-ASAE	4	X 8	20.25	2	FULL PSI	46	400.90
WWCL4010-S	4	X 10	20.25	2	FULL PSI	46	409.30
WWCL4012-S	4	X 12	22.25	2	FULL PSI	49	426.00
WWCL4014-S	4	X 14	24.25	2	FULL PSI	53	442.60
WWCL4016-S	4	X 16	26.25	2	FULL PSI	57	459.00
WWCL4018-S	4	X 18	28.25	2	FULL PSI	60	475.80
WWCL4020-S	4	X 20	30.25	2	FULL PSI	64	492.50
WWCL4024-S	4	X 24	34.25	2	FULL PSI	71	525.80
WWLS4024-S	4	X 24	32.00	2	FULL PSI	69	437.50
WWCL4030-S	4	X 30	40.25	2	25200 (2010 PSI)*	83	575.20
WWCL4036-S	4	X 36	46.25	2	18200 (1450 PSI)*	94	625.50

*THESE MODELS HAVE A COLUMN LOAD RESTRICTION THAT LIMITS THE MAXIMUM PUSH LOAD THAT THE CYLINDER CAN SAFELY BE OPERATED AT.